

# MOTORCYCLE RADIAL TYRE CONTENTS

## 目錄

P3

PRESENTATION 公司介紹

P8

PRODUCTS 產品

P9

RACING 賽道輪胎

P17

ON ROAD 公路輪胎

P33

CROSSOVER 多功能輪胎

P39

OFF ROAD 越野輪胎

P44

TECHNOLOGY 先進技術

P49

CONTACT US 联系我们



## KINGTYRE

- The only professional motorcycle radial tire manufacturer in China  
中國唯一專業生產摩托車子午輪胎的製造商
- 2000 pcs per day production capacity  
日產能 2000 條
- With advanced tire test, and manufacture technology  
先進的配方和工藝技術和專業測試，生產設備
- Owned CCC, DOT, ECE, REACH & ISO9001 certificates  
通過國家 3C、美國交通部 DOT、歐盟 ECE 及 REACH 認證、ISO9001 國際質量體系認證



## KINGTYRE Footprint

普馳足跡

2018  CSB  
中國賽車摩托車中心  
China Superbike Championship

2019  CSB  
中國賽車摩托車中心  
China Superbike Championship

2020  R3M

2021  R3M  SC SUPER COPRA  24h  
LE MANS

2022  24h  
LE MANS  SC SUPER COPRA  R3M



SPONSOR OF



mounting wet tyres



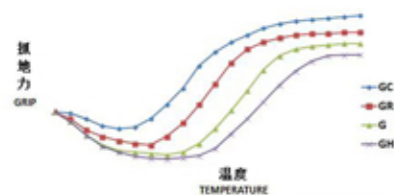
PRODUCTS

產 品

# KINGTYRE RACING

## 賽道輪胎

Compound	Code
Hard	GH
Middle	G
Soft	GR
Super Soft	GC



Silica compound improves the resistance to wet slip under any conditions, provide the best performance from the start of the warm-up

高性能硅基材料的膠料改善在任何條件下的濕滑性，從啟動熱身開始就發揮出最佳性能





Not allowed on general road  
不允許在一般道路上使用

Track	Street	Highway	Firm	Terre	Sand	Clay	Grass	Gravel
賽道	街道	公路	硬地	土路	沙地	泥地	草地	碎石
✔								



✔ -- Applicable      ✖ -- Incompletely applicable

K00



## FRONT

IP CODE	SIZE	COMPOUND	TL / TT	RIM
1005	90/90 R 10	G, GR, GC	TL	MT 2.15
1007	100/85 R 10	G, GR, GC	TL	MT 2.50
1207	100/90 R 12	G, GR, GC	TL	MT 2.50
GA1	95/75 R 17	G, GR, GC	TL	MT 2.50
1744	110/70 R 17	G, GR, GC	TL	MT 3.00
1743	120/70 R 17	G, GR, GC	TL	MT 3.50
1713	125/70 R 17	G, GR, GC	TL	MT 3.50

## REAR

IP CODE	SIZE	COMPOUND	TL / TT	RIM
1006	100/90 R 10	G, GR, GC	TL	MT 2.50
1008	120/80 R 10	G, GR, GC	TL	MT 2.75
1208	120/80 R 12	G, GR, GC	TL	MT 2.75
1755	115/75 R 17	G, GR, GC	TL	MT 3.00
GA2	120/70 R 17	G, GR, GC	TL	MT 3.50
1745	140/70 R 17	G, GR, GC	TL	MT 3.75
1732	160/60 R 17	G, GR, GC	TL	MT 4.50
1714	180/60 R 17	G, GR, GC	TL	MT 5.00
1726	200/60 R 17	G, GR, GC	TL	MT 6.00

## Rain



K01



Not allowed on general road  
不允許在一般道路上使用

Track 賽道	Street 街道	Highway 公路	Firm 硬地	Terre 土路	Sand 沙地	Clay 泥地	Grass 草地	Gravel 碎石
✔								

✔ -- Applicable    ● -- Incompletely applicable

### FRONT

IP CODE	SIZE	COMPOUND	TL / TT	RIM
W 1703	110/70 R 17	Super Soft	TL	MT 3.00
W 1701	125/80 R 17	Super Soft	TL	MT 3.00

### REAR

IP CODE	SIZE	COMPOUND	TL / TT	RIM
W 1704	140/70 R 17	Super Soft	TL	MT 3.75
W 1702	190/55 R 17	Super Soft	TL	MT 6.00



## Super Sport



K06



### FRONT

IP CODE	SIZE	LOAD INDEX	SPEED GRADE	TL / TT	RIM
Q 1727	110/70 ZR 17	54	(W)	TL	MT 3.00
Q 1736	120/70 ZR 17	58	(W)	TL	MT 3.50

### REAR

IP CODE	SIZE	LOAD INDEX	SPEED GRADE	TL / TT	RIM
Q 1728	140/70 ZR 17	66	(W)	TL	MT 3.75
Q 1746	160/60 ZR 17	69	(W)	TL	MT 4.50
Q 1737	180/60 ZR 17	75	(W)	TL	MT 5.00
Q 1738	200/55 ZR 17	78	(W)	TL	MT 6.25
Q 1742	200/60 ZR 17	80	(W)	TL	MT 6.00

## Mini GP



K96



### FRONT

IP CODE	SIZE	LOAD INDEX	SPEED GRADE	TL / TT	RIM
Q 1201	100/90 R 12	49	L	TL	MT 2.50

### REAR

IP CODE	SIZE	LOAD INDEX	SPEED GRADE	TL / TT	RIM
Q 1202	120/80 R 12	55	L	TL	MT 2.75



## KINGTYRE ON ROAD 公路輪胎



All-round superbike sports tyre with different compound and hardness for different purpose

不同膠料配方的全能超級摩托車運動輪胎，擁有不同的硬度，適用於不同用途，娛樂，運動，訓練等



Sport

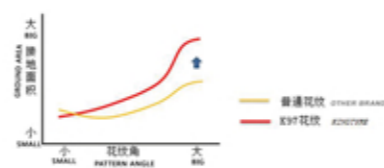
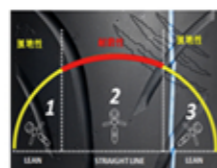


K97

Track 賽道	Street 街道	Highway 公路	Firm 硬地	Terre 土路	Sand 沙地	Clay 泥地	Grass 草地	Gravel 碎石
★	✔	✔	✔	★				
				✔ -- Applicable	★ -- Incompletely applicable			



1. The angular design is arranged according to the rolling direction to achieve good continuity when accelerating  
角形設計且按滾動方向排列，加速時達到良好的持續性
2. By setting up independent ditches to facilitate deformation when leaning, a short warm-up can be carried out  
通過設置獨立的溝來促進壓彎時的變形，可在短時間內進行熱身
3. The full shape of the independent groove on the shoulder strengthens the regularity and the sealing  
胎肩獨立小溝飽滿的形狀強化規則性，加強了封閉性



Optimized arranged patterns reduce wear of contact areas and enhance drainage of angle slopes  
優化佈置的花紋可以減少接觸面的磨損，並且能夠增強每個傾斜角的排水性。

FRONT

IP CODE	SIZE	LOAD INDEX	SPEED GRADE	TL / TT	RIM
P 1733	100/80 R 17	52	H	TL	MT 2.50
P 2105	100/90 ZR 21	59	(W)	TL	MT 2.50
P 1721	110/70 ZR 17	54	(W)	TL	MT 3.00
P 1706	120/60 ZR 17	55	(W)	TL	MT 3.50
P 1711	120/70 ZR 17	58	(W)	TL	MT 3.50
P 1811	120/70 ZR 18	59	(W)	TL	MT 3.50
P 1906	120/70 ZR 19	60	(W)	TL	MT 3.50
P 1818	130/70 R 18	63	V	TL	MT 3.50

REAR

IP CODE	SIZE	LOAD INDEX	SPEED GRADE	TL / TT	RIM
P 1734	130/70 R 17	62	H	TL	MT 3.50
P 1723	140/70 ZR 17	66	(W)	TL	MT 3.75
P 1722	150/60 ZR 17	66	(W)	TL	MT 4.25
P 1704	160/60 ZR 17	69	(W)	TL	MT 4.50
P 1718	170/60 ZR 17	72	(W)	TL	MT 4.50
P 1712	180/55 ZR 17	73	(W)	TL	MT 5.50
P 1741	180/60 ZR 17	75	(W)	TL	MT 5.00
P 1720	190/50 ZR 17	73	(W)	TL	MT 6.00
P 1705	190/55 ZR 17	75	(W)	TL	MT 6.00
P 1725	200/50 ZR 17	75	(W)	TL	MT 6.25
P 1724	200/55 ZR 17	78	(W)	TL	MT 6.25
P 1735	240/45 ZR 17	82	(W)	TL	MT 8.50
P 1806	240/40 R 18	79	V	TL	MT 8.50
P 1809	250/40 R 18	81	V	TL	MT 9.00
P 1810	260/40 R 18	84	V	TL	MT 9.00

Sport



K905



FRONT

IP CODE	SIZE	LOAD INDEX	SPEED GRADE	TL / TT	RIM
P 1756	100/80 R 17	52	H	TL	MT 2.50
P 1739	110/70 ZR 17	54	(W)	TL	MT 3.00
P 1729	120/70 ZR 17	58	(W)	TL	MT 3.50

REAR

IP CODE	SIZE	LOAD INDEX	SPEED GRADE	TL / TT	RIM
P 1757	130/70 R 17	62	H	TL	MT 3.50
P 1740	140/70 ZR 17	66	(W)	TL	MT 3.75
P 1730	180/55 ZR 17	73	(W)	TL	MT 5.50
P 1731	190/50 ZR 17	73	(W)	TL	MT 6.00



K902



FRONT

IP CODE	SIZE	LOAD INDEX	SPEED GRADE	TL / TT	RIM
P 1709	120/70 ZR 17	58	(W)	TL	MT 3.50

REAR

IP CODE	SIZE	LOAD INDEX	SPEED GRADE	TL / TT	RIM
P 1710	180/55 ZR 17	73	(W)	TL	MT 5.50
P 1715	190/50 ZR 17	73	(W)	TL	MT 6.00

Commute



K70



FRONT

IP CODE	SIZE	LOAD INDEX	SPEED GRADE	TL / TT	RIM
P 1601	130/90 R 16	67	V	TL	MT 3.00
P 1813	130/70 R 18	63	H	TL	MT 3.50

REAR

IP CODE	SIZE	LOAD INDEX	SPEED GRADE	TL / TT	RIM
P 1602	150/80 R 16	71	V	TL	MT 3.50
P 1604	180/60 R 16	74	H	TL	MT 5.00
P 1603	200/55 R 16	77	H	TL	MT 6.25



K903



FRONT

IP CODE	SIZE	LOAD INDEX	SPEED GRADE	TL / TT	RIM
P 1707	60/90 R 17	36	S	TL / TT	1.4

REAR

IP CODE	SIZE	LOAD INDEX	SPEED GRADE	TL / TT	RIM
P 1708	80/90 R 17	50	S	TL / TT	MT 1.85

Cruiser



K99

Track 賽道	Street 街道	Highway 公路	Firm 硬地	Terre 土路	Sand 沙地	Clay 泥地	Grass 草地	Gravel 碎石
	✓	✓	✓					

✓ -- Applicable     ⚠ -- Incompletely applicable



FRONT

IP CODE	SIZE	LOAD INDEX	SPEED GRADE	TL / TT	RIM
P 1814	130/60 R 18	60	(V)	TL	MT 3.50
P 1903	130/70 R 19	64	V	TL	MT 3.50
D 2301	130/60 - 23	65	H	TL	MT 3.50

REAR

IP CODE	SIZE	LOAD INDEX	SPEED GRADE	TL / TT	RIM
P 1815	260/40 R 18	84	(V)	TL	MT 9.00
P 1816	280/35 R 18	84	(V)	TL	MT 10.00
P 1808	300/35 R 18	87	W	TL	MT 10.50
P 1802	310/35 R 18	87	V	TL	MT 10.50
P 1804	360/30 R 18	92	V	TL	MT 13.00
P 1812	400/30 R 18	98	V	TL	MT 14.50

Cruiser



K909

Track 賽道	Street 街道	Highway 公路	Firm 硬地	Terre 土路	Sand 沙地	Clay 泥地	Grass 草地	Gravel 碎石
	✔	✔	✔					

✔ -- Applicable     ✘ -- Incompletely applicable

FRONT

IP CODE	SIZE	LOAD INDEX	SPEED GRADE	TL / TT	RIM
P 2301	130/60 R 23	65	V	TL	MT 3.50

REAR

IP CODE	SIZE	LOAD INDEX	SPEED GRADE	TL / TT	RIM
P 2106	260/35 VR 21	83	(V)	TL	MT 9.00



Scooter



K95



FRONT

IP CODE	SIZE	LOAD INDEX	SPEED GRADE	TL / TT	RIM
P 1401	120/70 R 14	55	H	TL	MT 3.50
P 1501	120/70 R 15	56	H	TL	MT 3.50

REAR

IP CODE	SIZE	LOAD INDEX	SPEED GRADE	TL / TT	RIM
P 1402	160/60 R 14	65	H	TL	MT 4.50
P 1502	160/60 R 15	67	H	TL	MT 4.50



K96



IP CODE	SIZE	LOAD INDEX	SPEED GRADE	TL / TT	RIM
Z 1001	3.50 R 10	51	L	TL	MT 2.50
Z 1002	90/90 R 10	50	L	TL	MT 2.15
Z 1003	100/85 R 10	54	L	TL	MT 2.50

## Scooter



K70

Track 賽道	Street 街道	Highway 公路	Firm 硬地	Terre 土路	Sand 沙地	Clay 泥地	Grass 草地	Gravel 碎石
	✓	✓	★					

✓ -- Applicable      ★ -- Incompletely applicable

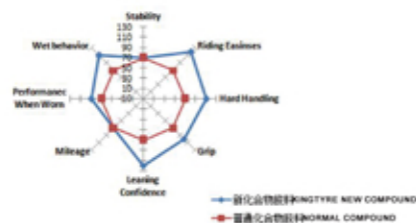
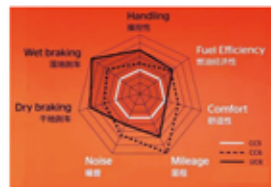
IP CODE	SIZE	LOAD INDEX	SPEED GRADE	TL / TT	RIM
Z 1009	90/90 R 10	50	L	TL	MT 2.15
Z 1004	100/90 R 10	56	L	TL	MT 2.50
Z 1203	90/90 R 12	54	L	TL	MT 2.15
Z 1204	110/70 R 12	47	L	TL	MT 3.00
Z 1205	120/70 R 12	51	L	TL	MT 3.50
Z 1206	130/70 R 12	56	L	TL	MT 3.50





# KINGTYRE CROSSOVER

## 多功能輪胎



Dual compound tread technology: maintains straight line stability & enhanced grip at maximum lean angles, Make the connection between your bike and the road stronger, especially on smooth surfaces, ensures the best stability and gives the rider the most confidence, Silica compound dioxide delivers better fuel efficiency and wet grip

雙配方技術：保持直線穩定性和增強轉彎時的抓地力，使你的機車與道路連接的更加堅固，尤其是在光滑的路面上，更好的確保最好的穩定性，給騎乘者最大的自信心。白炭黑配方提供了更好的燃油效率和濕抓地力





80% on road / 20% off road

Track 賽道	Street 街道	Highway 公路	Firm 硬地	Terre 土路	Sand 沙地	Clay 泥地	Grass 草地	Gravel 碎石
	✓	✓	✓	✓		★	★	
	-- Applicable				-- Incompletely applicable			

K66



### FRONT

IP CODE	SIZE	LOAD INDEX	SPEED GRADE	TL / TT	RIM
T 2101	90/90 R 21	54	V	TL / TT	MT 2.15
T 2103	100/90 R 21	59	V	TL / TT	MT 2.50
T 1747	100/80 R 17	52	H	TL / TT	MT 2.50
T 1711	120/70 ZR 17	58	(W)	TL	MT 3.50
T 1901	120/70 R 19	60	V	TL / TT	MT 3.50
T 1902	110/80 R 19	59	V	TL / TT	MT 2.50

### REAR

IP CODE	SIZE	LOAD INDEX	SPEED GRADE	TL / TT	RIM
T 1748	130/70 R 17	62	H	TL / TT	MT 3.50
T 1749	130/80 R 17	65	V	TL / TT	MT 3.00
T 1805	140/70 R 18	67	V	TL / TT	MT 3.75
T 1719	150/70 R 17	69	V	TL / TT	MT 4.25
T 1803	150/70 R 18	70	V	TL / TT	MT 4.25
T 1704	160/60 R 17	69	V	TL / TT	MT 4.50
T 1718	170/60 R 17	72	V	TL / TT	MT 4.50



KR5

50% on road / 50% off road

Track 賽道	Street 街道	Highway 公路	Firm 硬地	Terre 土路	Sand 沙地	Clay 泥地	Grass 草地	Gravel 碎石
	★	✔	✔	✔	✔		✔	✔
				✔ -- Applicable			✔ -- Incompletely applicable	

**FRONT**

IP CODE	SIZE	LOAD INDEX	SPEED GRADE	TL / TT	RIM
T 2107	90/90 R 21	54	H	TL	MT 2.15

**REAR**

IP CODE	SIZE	LOAD INDEX	SPEED GRADE	TL / TT	RIM
T 1817	150/70 R 18	70	H	TL	MT 4.25



## KINGTYRE OFF ROAD

### 越野輪胎

Better wear resistance, excellent grip and flexibility performance, make the the riding more prominent, enjoy more fun off-road game

擁有更出色的耐磨性，更優秀的抓著力和彈性，使操控性更突出，享受更有樂趣的越野



## Semi Cross



K82



Not allowed on general road  
不允許在一般道路上使用

Track 賽道	Street 街道	Highway 公路	Firm 硬地	Terre 土路	Sand 沙地	Clay 泥地	Grass 草地	Gravel 碎石
			✔	✔	✔	★	✔	✔
			✔ -- Applicable			★ -- Incompletely applicable		

### FRONT

IP CODE	SIZE	LOAD INDEX	SPEED GRADE	TL / TT	RIM
Y 2101	90/90 R 21	54	H	TL / TT	MT 2.15
Y 1905	120/70 R 19	60	H	TL / TT	MT 3.50

### REAR

IP CODE	SIZE	LOAD INDEX	SPEED GRADE	TL / TT	RIM
Y 1719	150/70 R 17	69	S	TL / TT	MT 4.25
Y 1803	150/70 R 18	70	H	TL / TT	MT 4.25
Y 1718	170/60 R 17	72	H	TL / TT	MT 4.50



## Cross One



Not allowed on general road  
不允許在一般道路上使用

Track 賽道	Street 街道	Highway 公路	Firm 硬地	Terre 土路	Sand 沙地	Clay 泥地	Grass 草地	Gravel 碎石
			✔	✔	✔	✔	✔	✔
			✔ -- Applicable			⚠ -- Incompletely applicable		

### FRONT

IP CODE	SIZE	LOAD INDEX	SPEED GRADE	TL / TT	RIM
Y 2104	80 /100 R 21	51	M	TL / TT	MT 1.85

### REAR

IP CODE	SIZE	LOAD INDEX	SPEED GRADE	TL / TT	RIM
Y 1807	100/90 R 18	56	M	TL / TT	MT 2.50
Y 1904	110/90 R 19	62	M	TL / TT	MT 2.50

TECHNOLOGY  
先進技術



Low flat rate can make contour completely controlled uniform pressure distribution linear tension decrease when driving improve flexibility balance performance

低扁平率使輪廓線完全地受控制，使壓力的分佈均勻，使直線行駛時張力減少，提高駕駛的靈活性和平衡性能

帶束層鋼絲的選取 Wire of the Steel Belt

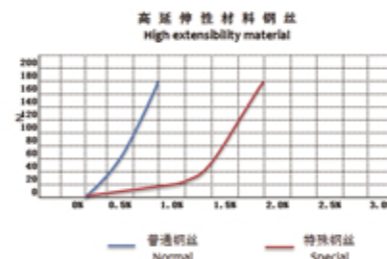


Winding structure:

- Lightweight Structure
- Wire properties increased
- The reasonable distribution of the strength and weight ratio

纏繞構造:

- 結構的輕量化
- 鋼絲特性的提高
- 剛度及重量比的合理分配



High extensibility steel wire:

- Lightweight Structure
- The best structure stability when high speed
- Enhance the shock absorption of the road

高延伸性的鋼絲:

- 結構的輕量化
- 高速時結構最高的穩定性
- 增強路面的吸震性



Tread 胎面中心膠

the part contact with road surface, material is characterized by excellent abrasion resistance to extend its service life  
與路面接觸，膠料特點為耐磨性強，延長其使用壽命。

Tread shoulder 胎面肩膠

the part contact with road surface, material characteristics for more emphasis on grasping ground performance, better grip when the tire tilts, improves safety and stability.  
與路面接觸，膠料特點為更強調抓地性能，輪胎傾斜時有更好的抓著力提高安全性和穩定性。

Side wall 胎側膠

material is made of flexural & fatigue resistant, to make the riding more comfortable  
膠料採用耐屈撓抗疲勞使其行駛中更舒適。

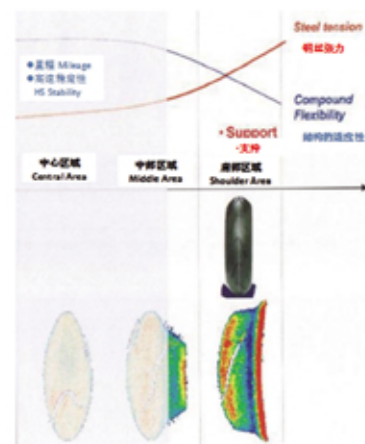
Chafer 輪緣膠

material with good wear resistance, not easy to wear out when connected with rim  
膠料的選用耐磨性好，與輪輻接觸時不易磨損。

Width mm	Flat Rate	Radial	Inner Diameter	Load Index	Speed Grade	Tubeless or Tube Tire	Pattern
190	/ 55	ZR	17	75	W	TL	K 97
150	/ 70	R	17	69	V	TL / TT	K 66

SPEED GRADE CONVERSION (km/h)											
Code	km/h	Code	km/h	Code	km/h	Code	km/h	Code	km/h	Code	km/h
B	50	H	70	J	100	M	130	Q	160	T	190
C	60	F	80	K	110	N	140	R	170	U	200
D	65	G	90	L	120	P	150	S	180	H	210
										V	240
										(W)	> 240
										Z	> 270
										Y	300
										W	270

LOAD INDEX CONVERSION (kg)											
Index	kg	Index	kg	Index	kg	Index	kg	Index	kg	Index	kg
15	69	26	95	37	128	48	180	59	243	70	335
16	71	27	97.5	38	132	49	185	60	250	71	345
17	73	28	100	39	136	50	190	61	257	72	355
18	75	29	103	40	140	51	195	62	265	73	365
19	77.5	30	106	41	145	52	200	63	272	74	375
20	80	31	109	42	150	53	206	64	280	75	387
21	82.5	32	112	43	155	54	212	65	290	76	400
22	85	33	115	44	160	55	218	66	300	77	412
23	87.5	34	118	45	165	56	224	67	307	78	425
24	90	35	121	46	170	57	230	68	315	79	437
25	92.5	36	125	47	175	58	236	69	325	80	450
										81	462
										82	475
										83	487
										84	500
										85	515
										86	530
										87	545
										88	560
										89	580
										90	600
										91	615

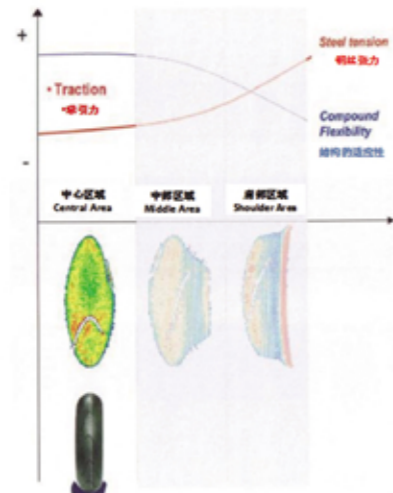


Full tilt Angle: high tension, Good flexibility

全傾角：高張力，柔韌性好

Get perfect trajectory when tilting  
壓彎時得到完美軌跡

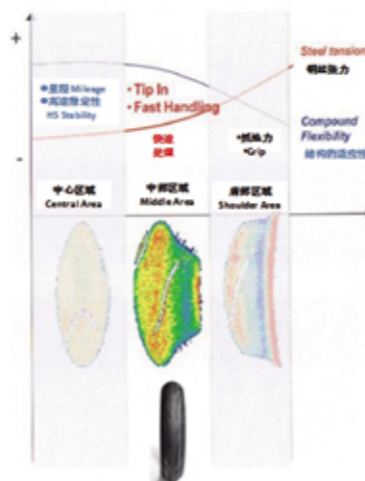
The maximum trajectory is supported when tilting  
壓彎時支援最大的軌跡精度



Straight riding: low tension, high flexibility  
直行路：低張力，靈活性高

Tilted gradually reduce wire winding tension, straight riding get the maximum traction  
傾斜逐步減少鋼絲纏繞的張力，直行時得到最大的牽引力

Provide higher flexibility when go straight  
直行時提供更高的靈活性



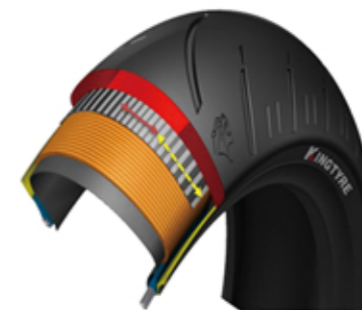
Controlling: low tension, balance the flexibility

操控性：低張力，平衡靈活性

The outline offer the best balance between tilting&high flexibility  
傾斜高靈活性之間由最好的輪廓來平衡

Perfect structure characteristics the interaction between carcass ply and steel belt

緊密的結構特點  
簾布層與帶束層之間的相互作用



0° steel belt technology improves tire's safety and stability in a high speed.

0° 鋼絲帶束層在高速行駛狀態下提高輪胎的安全性和平穩性

Using polyester cord and radial structure safer and more comfortable than Bias tire.

相對於斜交輪胎，選擇聚酯簾布和鋼絲帶束層結構輪胎能提供更安全，更舒適的駕駛體驗

Applying hexagonal bead wire with winding technology, super elastic steel wires improve tire bead's compactibility.

應用六角鋼絲圈纏繞技術，降低了胎圈部位的剪切力，提高了可靠性



PRODUCT QUALITY AND CREDIBILITY

## MAXIMIZE THE FUTURE

GENUINELY HOPE  
TO ESTABLISH  
LONG TERMS RELATIONSHIP  
WITH CUSTOMERS  
FROM BOTH AT HOME AND ABROAD!

真誠期待與您合作!  
質量帶來信譽 合作才能共贏

Kingtyre is composed of efficient and passionate staff with professional knowledge and industry information resources  
To make the safest the most perfect motorcycle tyre has been KINGTYRE unremitting pursuit

Insisting the quality policy of Innovation Excellence Satisfaction Extreme

Kingtyre is committed to supply high quality tires and services for our customers from oversea and at home

我們由一支團結高效的團隊組成，其骨幹擁有國家科研院、所、知名輪胎企業，近三十年的工作經歷，具備豐富的知識積累、工作經驗以及行業信息資源。  
做最安全，最完美的摩托車子午輪胎一直是普馳人的不懈追求。我們秉持“創新、卓越、滿意、至臻”的質量方針竭誠為廣大客戶提供優質的產品與服務

## Tianjin Kingtyre Group Co., Ltd

天津恆泰普馳科技有限公司  
天津市濱海新區古林街古林工業區

Gulin Industrial Park, Gulin Street,  
Binhai New Area, Tianjin, China (Factory)  
TEL:86-22-63342301 / Fax:86-22-63342340  
www.kingtyre.cn / www.king-tyres.com

天津昆泰輪胎銷售有限公司  
天津市河北區旺海國際廣場B座1502-2

Room 1502-2, Wanghai International Plaza  
Hebei Dist. Tianjin, China (Export Department)  
TEL:86-22-58010324/ Fax:86-22-24462993  
E-mail: sharon@kingtyre.cn

